

System Requirements

<p>Operating System Nintex Workflow 2007™ must be installed on Microsoft Windows Server 2003.</p>	<p>Browser Client Microsoft Internet Explorer 6.x although Microsoft Internet Explorer 7 or greater is recommended.</p>	<p>Software Nintex Workflow 2007™ requires that the following software is installed and correctly configured:</p>	<ul style="list-style-type: none"> • Microsoft Windows SharePoint Services 3.0 or Microsoft Office SharePoint Server 2007. • Microsoft .NET Framework 3.0 or 3.5. • PLEASE NOTE: Nintex Workflow 2007 cannot connect to a Windows Internal Database that is used by standalone SharePoint installations.
--	--	--	---

Installation Procedure Contents

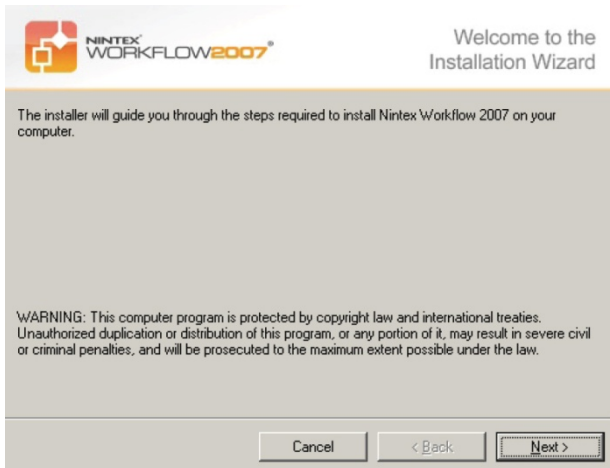
1 Installing Nintex Workflow 2007™	2
1.1 Run the installer	2
1.2 Deploy the solution package	3
1.3 Importing the license	4
2 Database Configuration	5
2.1 Configuration Database	5
2.2 Content Database	6
3 Configure NW2007 Server settings	7
3.1 Web application activation	7
3.2 Enable NW2007 Workflow actions	7
3.3 Configure email settings	7
3.4 Enable and configure LazyApproval™	8
4 Activation features	9
4.1 Site collection activation	9
4.2 Team site activation	10

1 Installing Nintex Workflow 2007™

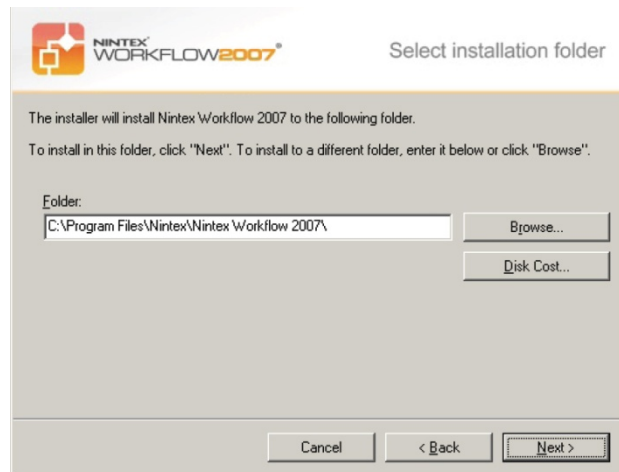
1.1 Run the installer

1. Login to the server as a SharePoint administrator with sufficient privileges to deploy solutions and features.

Double click the installer file (msi) and click "Next".



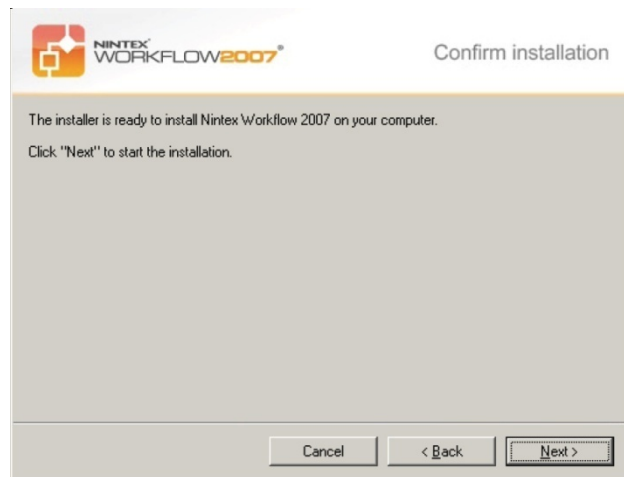
3. Select a location to install Nintex Workflow 2007. The default location is C:\Program Files\Nintex\Nintex Workflow 2007\ then click "Next".



2. Read the End-User License Agreement. You must select "I - Agree" for the installation to proceed. Click "Next".



4. The installer will inform you it is ready to proceed. Click "Next".

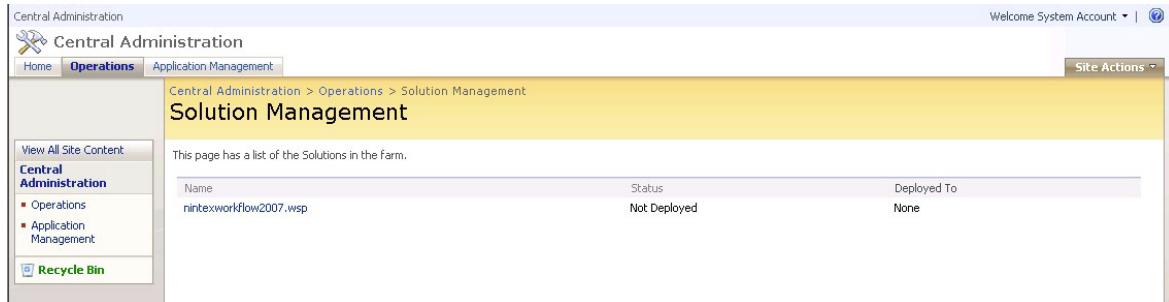


5. You will see command prompt windows appear and disappear. After a short while the "Installation complete" screen will appear. Click the "Close" button. SharePoint Central Administration will have loaded in the background.

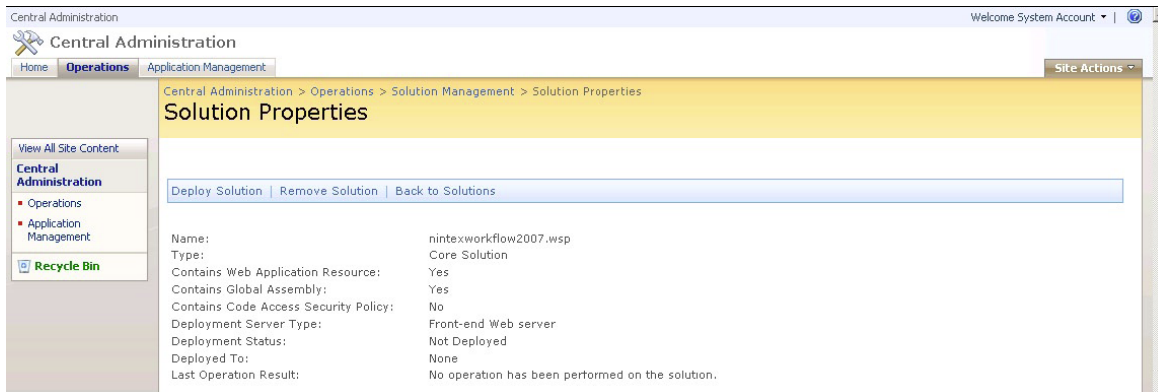
1 Installing Nintex Workflow 2007™ (cont.)

1.2 Deploy the solution package

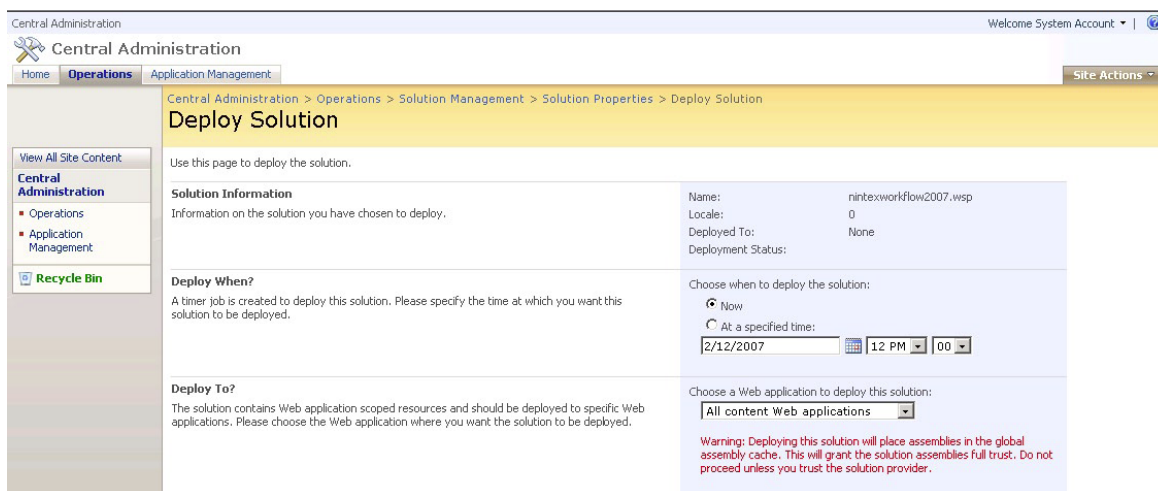
6. The solution “nintexworkflow2007.wsp” should be visible.



7. Click the “nintexworkflow2007.wsp” link and then click the “Deploy Solution” link in the toolbar.



8. In the “Deploy to?” section, ensure that “All content Web applications” is selected then click the “OK” button (button not shown).

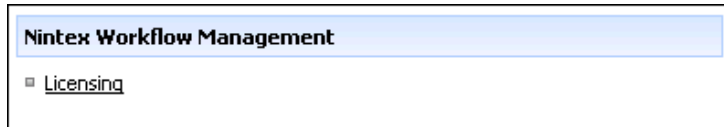


9. After a short interval, you will be returned to the “solutions Management” page. Nintex Workflow 2007™ should now appear as “Deployed”.

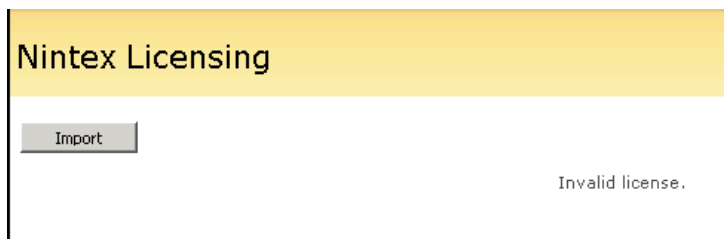
1 Installing Nintex Workflow 2007™ (cont.)

1.3 Importing the license

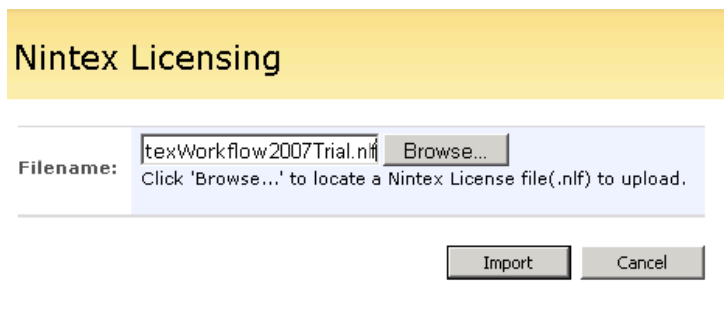
10. For full product functionality you must have a license file provided by Nintex, be it a full production license or an evaluation license. You will then need to import your license file into SharePoint Central Administration. In Central Administration, click the “Application Management” tab. Then, in the Nintex Workflow 2007 Server Management section, click the link “Licensing”.



11. Click On the Nintex Licensing page, click the “Import” button.



12. Click the browse button to locate your license file and once you have located it, click the “Import” button.



13. The Licensing information will then be displayed.

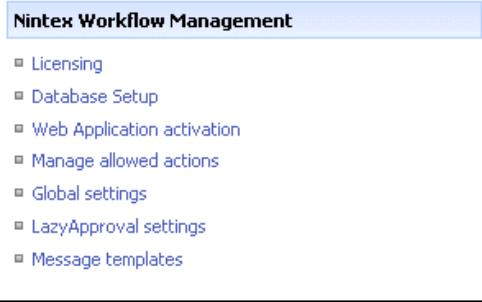


You can now proceed to configure databases for Nintex Workflow 2007™.

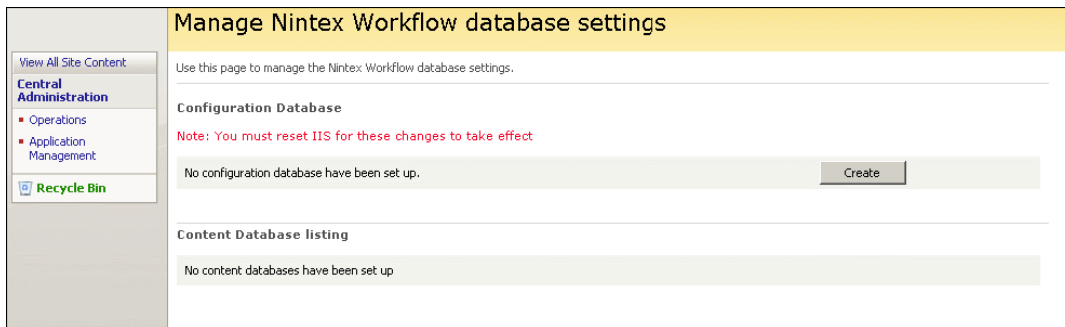
2 Database configuration

2.1 Configuration database

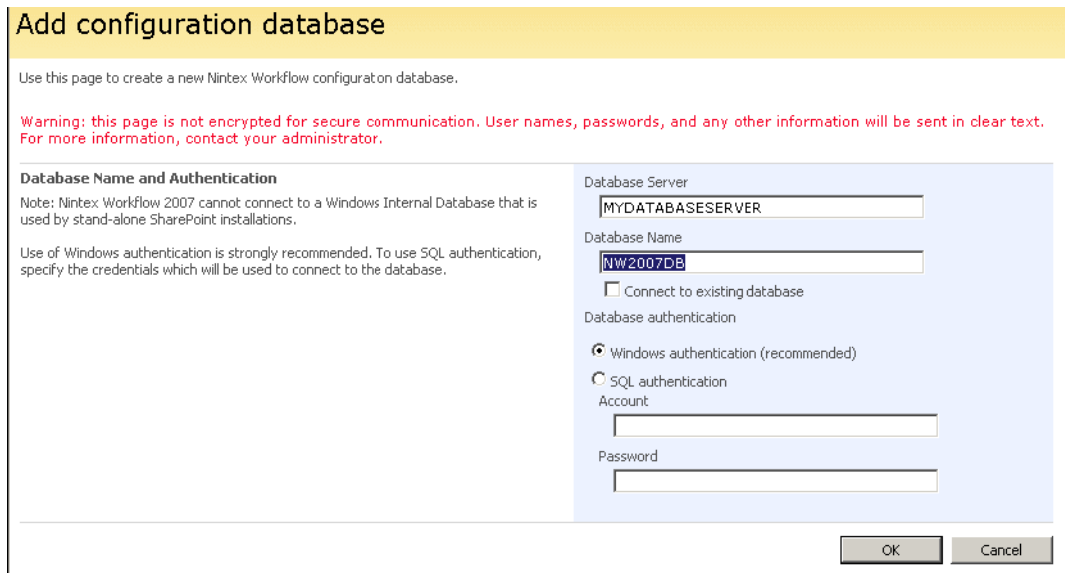
1. In Central Administration, click the "Application Management" tab.
2. In the section "Nintex Workflow Management", click "Nintex Database Setup".



3. Click the "Create" button under "Configuration Database".



4. Enter the name of your database server (note, it defaults to the default SharePoint database server).

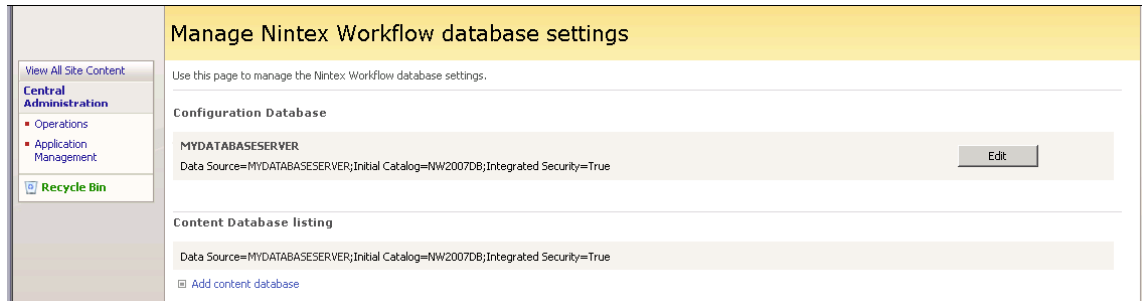


5. Enter a name for the database. Please note, NW2007 can use multiple databases, one for configuration and others for content. By default the configuration database is also made the content database. You can add more databases optionally.

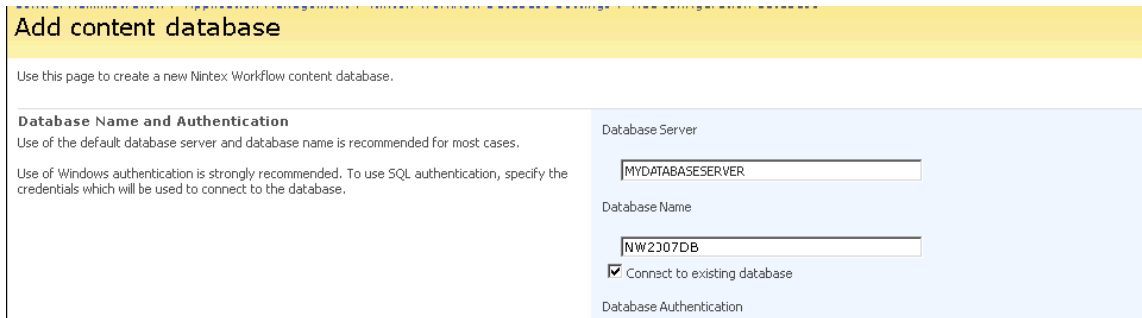
2 Database configuration (cont.)

2.2 Content database

6. OPTIONAL: Now click on the “Add Content Database” link..



7. To add a content database, click the “Connect to existing database” check-box and click “OK” (button not shown).

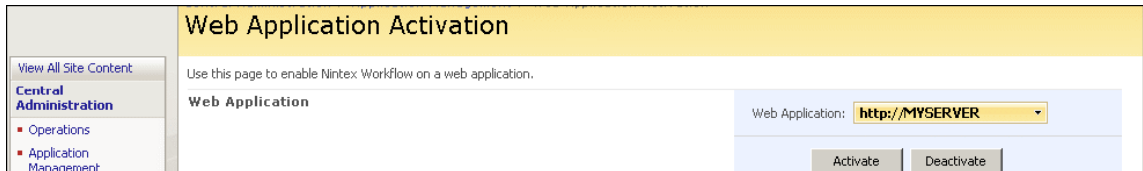


It is now possible to activate Nintex Workflow 2007™ for the SharePoint Site Collection.

3 Configure NW2007 server settings

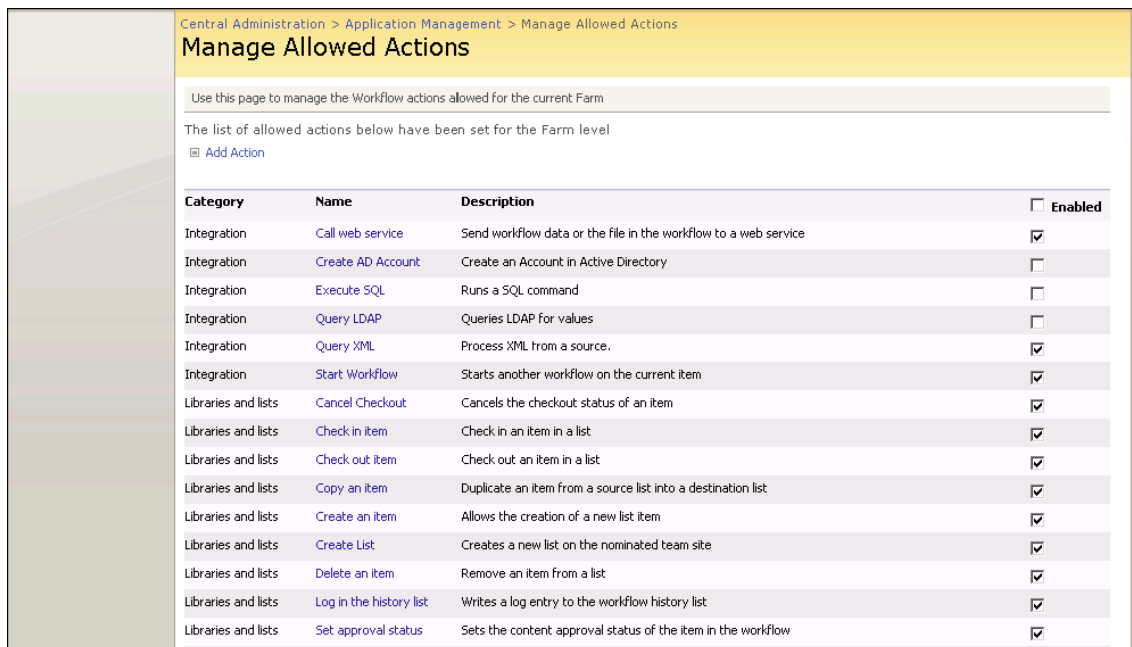
3.1 Web application activation

1. Click the "Application Management" tab then click on "Web Application Activation" in the "Nintex Workflow Management" section.
2. The default web application name should be chosen automatically. Click the "Activate" button.



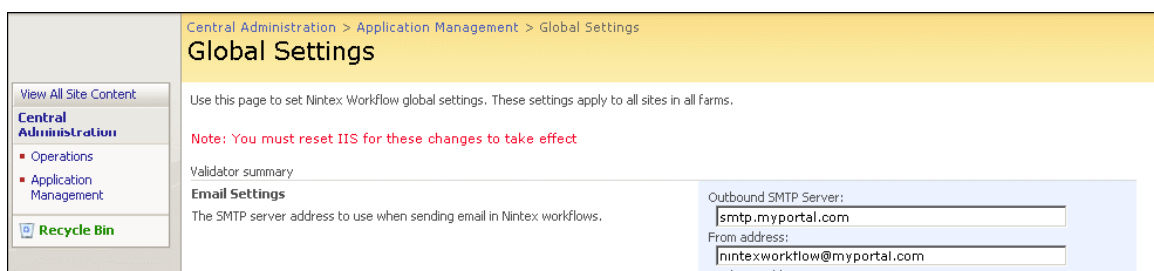
3.2 Enable NW2007 Workflow actions

3. Click the "Application Management" tab then click on "Manage Allowed Actions" in the "Nintex Workflow Management" section.
4. Check the boxes of the actions you want to appear in the Workflow Designer then click "Save" (not shown).



3.3 Configure email settings

5. Click the "Application Management" tab then click on "Global Settings" in the "Nintex Workflow Management" section.
6. Fill in the appropriate details for your environment and click the OK button.



It is now possible to activate Nintex Workflow 2007™ for the SharePoint Site Collection.

3 Configure NW2007 server settings (cont.)

3.4 Web application activation

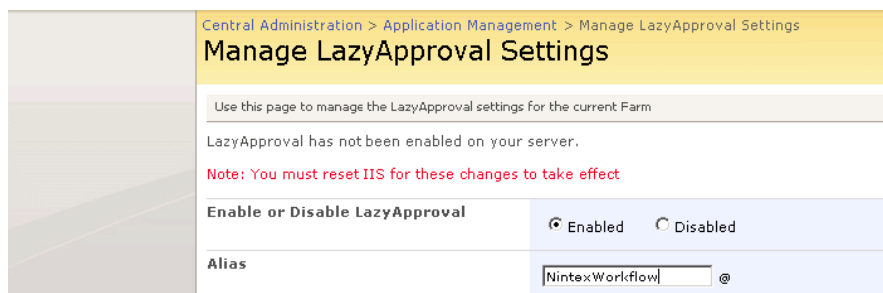
7. Click the "Application Management" tab then click on "Nintex LazyApproval Settings" in the "Nintex Workflow Management" section.

8. If you see the link "Configure server incoming mail settings" then those settings are not configured for SharePoint. Please configure them according to your SharePoint configuration documentation. Return to this page after completing your configuration.

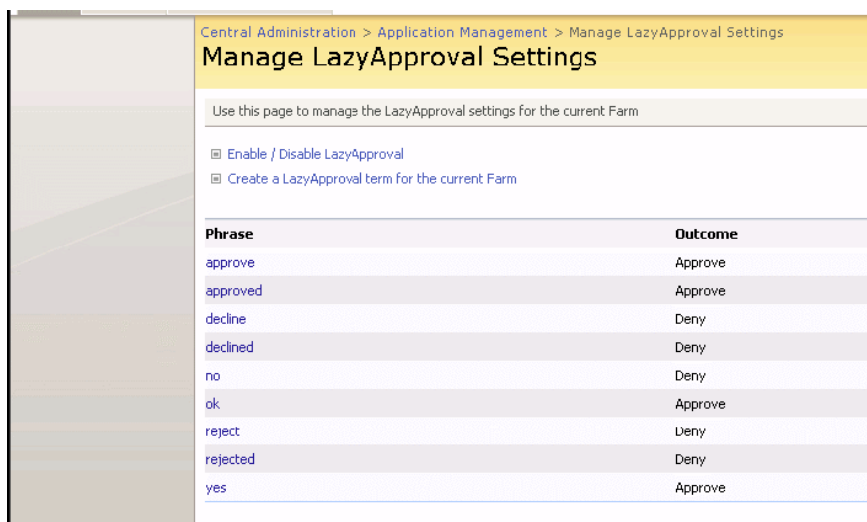
If those settings are configured, you will instead see the link "Enable LazyApproval" which you will need to click.



9. Now select the "Enabled" option. You will be asked for an "alias" which is the name that will be used in the email address that sends the notifications and accepts the LazyApproval replies. Press the "OK" button (not shown).



10. A list of allowed words will appear which are those that will be recognised by the LazyApproval process. You can add or remove terms at your discretion. Click the "OK" button when you are finished (not shown).

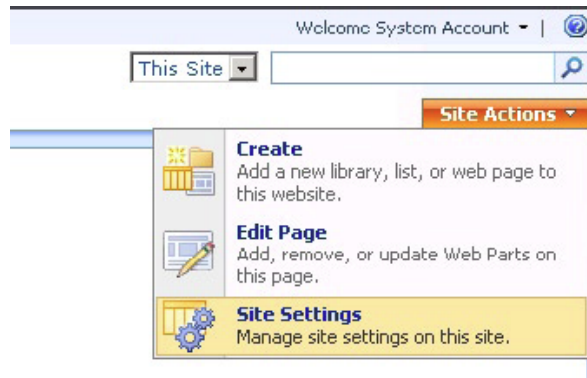


It is now possible to activate Nintex Workflow 2007™ for the SharePoint Site Collection.

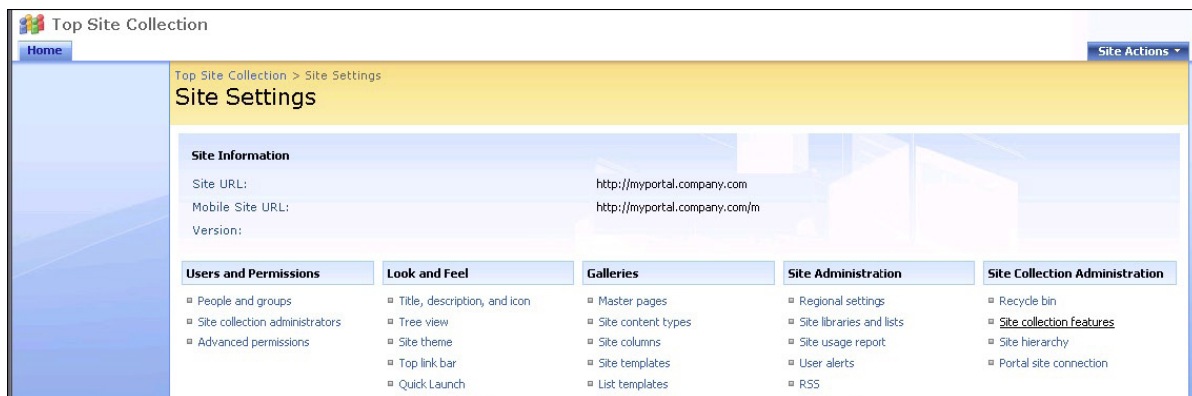
4 Activate features

4.1 Site collection activation

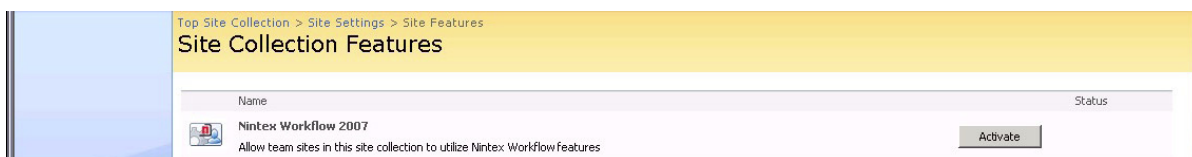
1. Navigate to your Top Site level home page and click “Site Actions > Site Settings”.



2. In the right column, “Site Collection Administration”, click “Site Collection Features”.



3. In the “Nintex Workflow 2007” section, click the “Activate” button.



4. After a short delay, the page will refresh and the status will become “Active”.



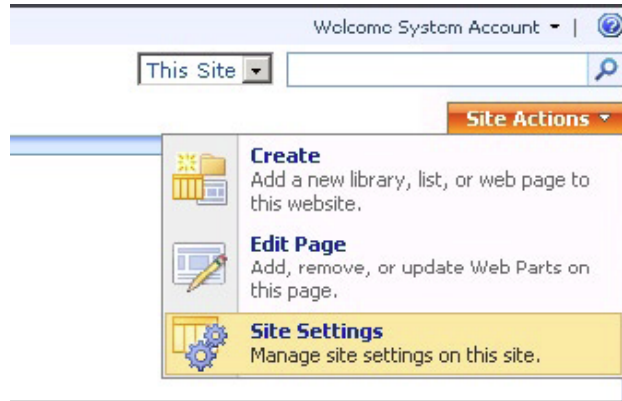
It is now possible to activate Nintex Workflow 2007™ features in team sites.

4 Activate features (cont.)

4.4 Team site activation

Enabling Nintex Workflow 2007™ for a team site involves the same process as enabling it for a site collection except step 2.

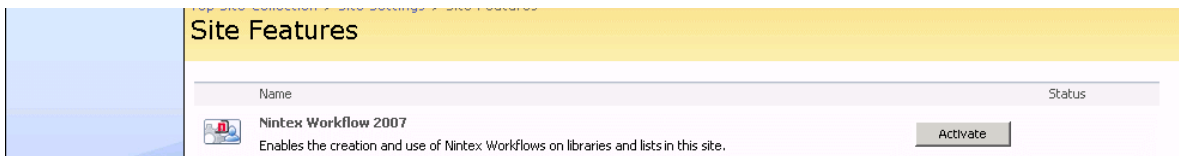
1. From the Top Site level home page, click “Site Actions > Site Settings”.



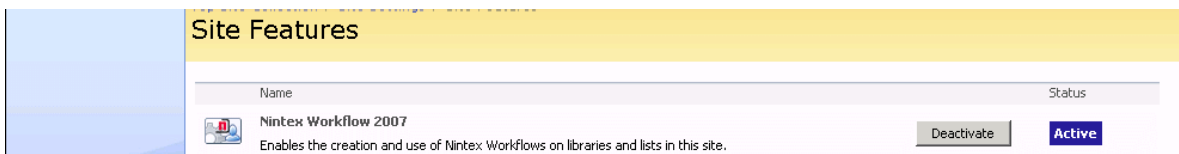
2. In the right column, “Site Administration”, click “Site Features”.



3. In the Nintex Workflow 2007™ section, click the “Activate” button.



4. After a short delay, the page will refresh and the status will become “Active”



It is now possible to design and interact with Nintex Workflow 2007™. For more information, please refer to the product help files, accessible from any page that uses Nintex Workflow 2007 functionality.